

# **Green growth and the state of the environment in Europe: indicator based assessments**

**Jacqueline McGlade, Executive Director, European Environment Agency**

**Thursday June 21<sup>st</sup> 2012**



# Green economy and well-being

*An economy in which policies and innovations enable society to use resources efficiently, enhancing human well-being in an inclusive manner, while maintaining the natural systems that sustain us.*



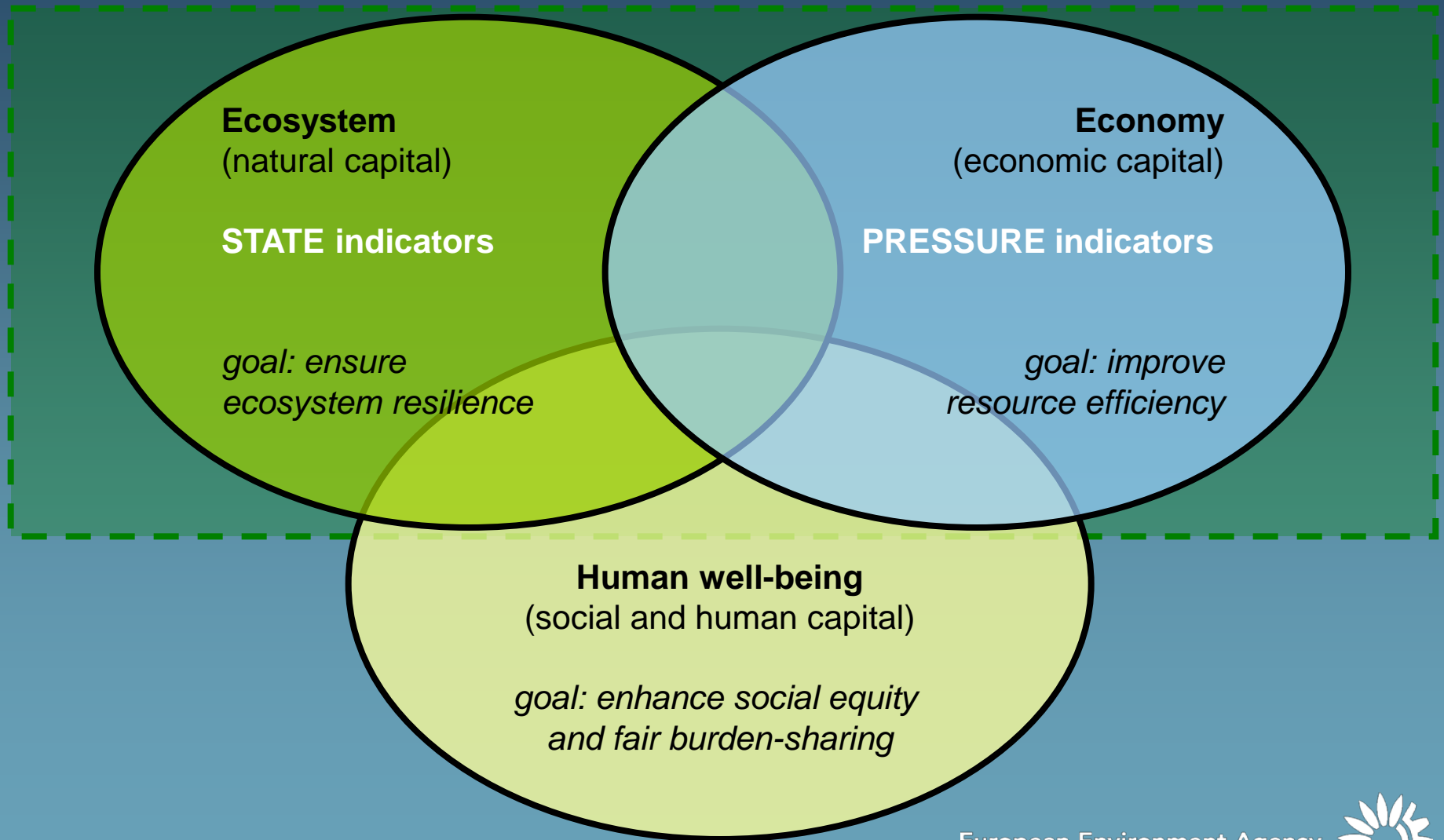
# Measuring what matters



Indicators help us to measure the environment and provide the tools to inform policy.

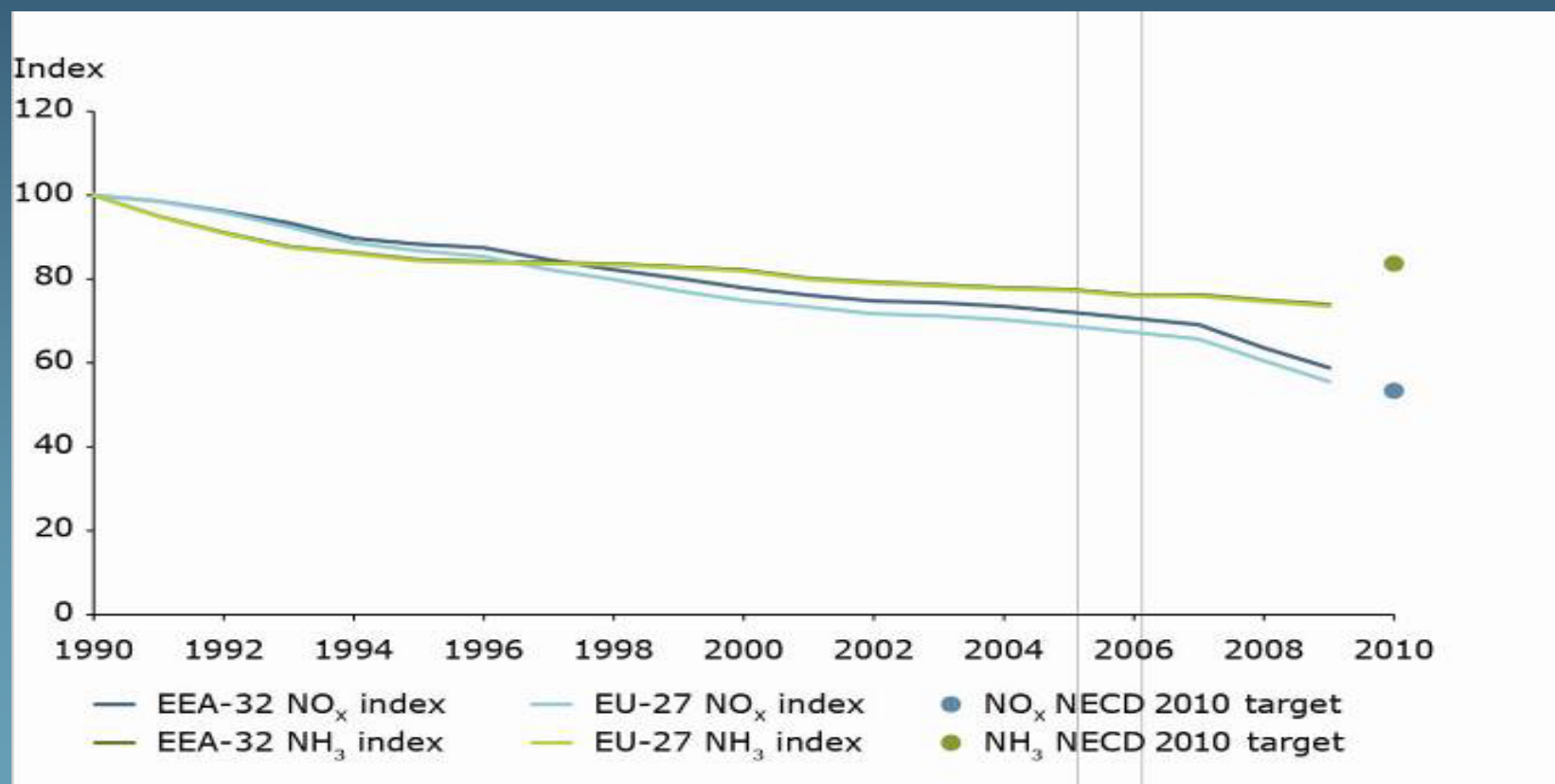


# EEA Environmental Indicator Report 2012



# Nitrogen emissions and biodiversity

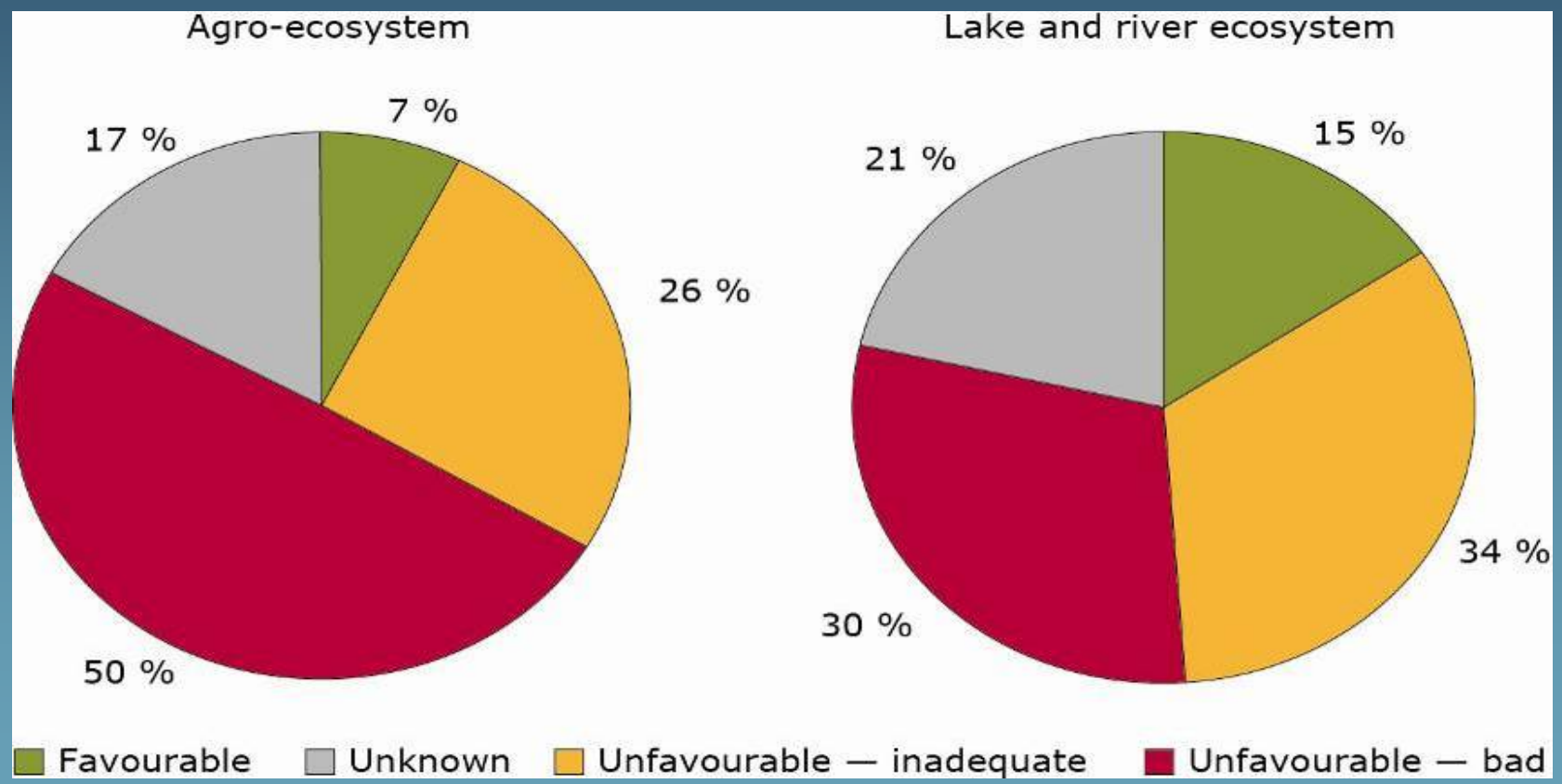
Emissions are falling, showing an improvement in resource efficiency...





# Nitrogen emissions and biodiversity

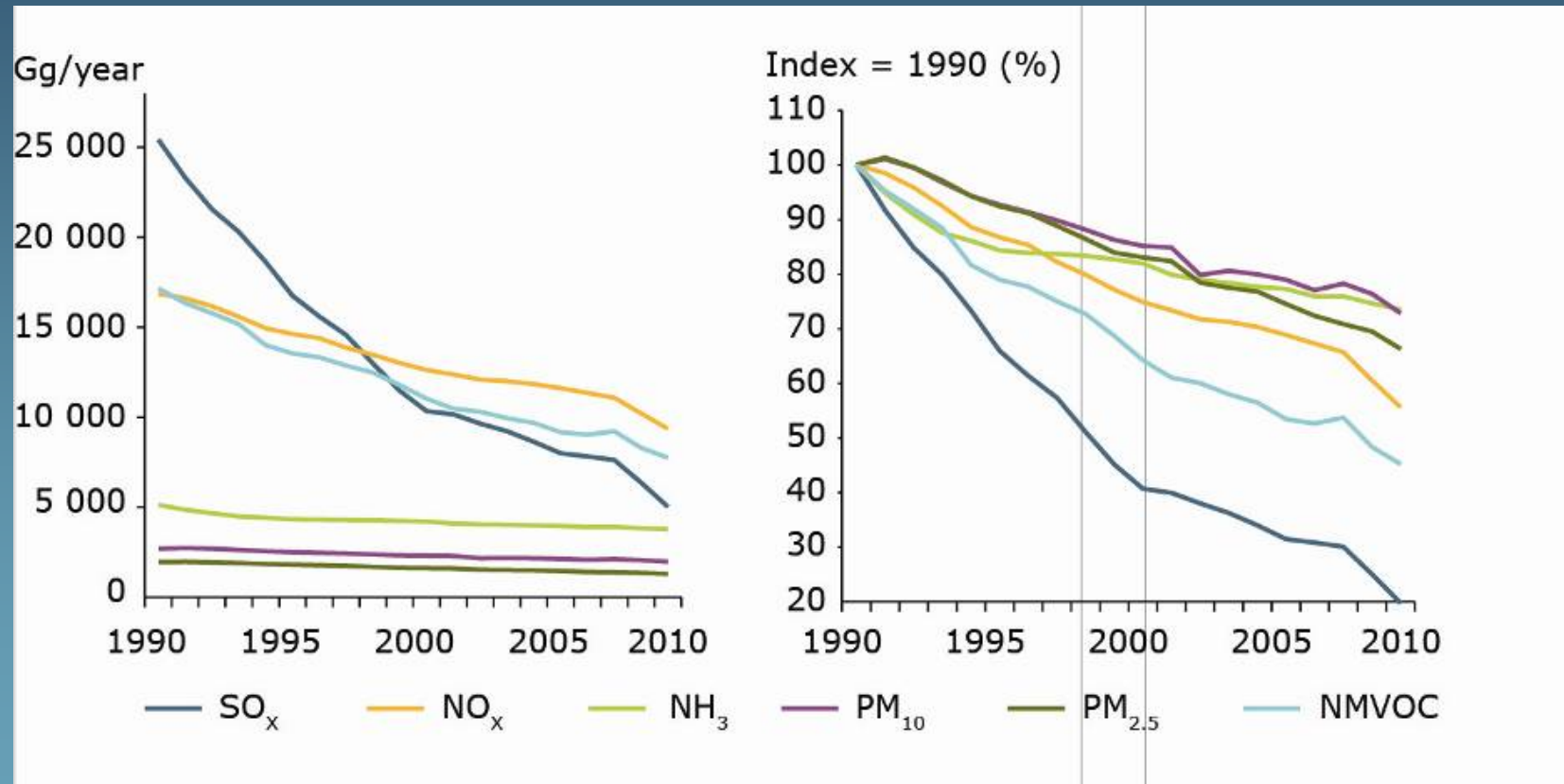
...but the conservation status of many ecosystems is still poor





# Air pollution and air quality

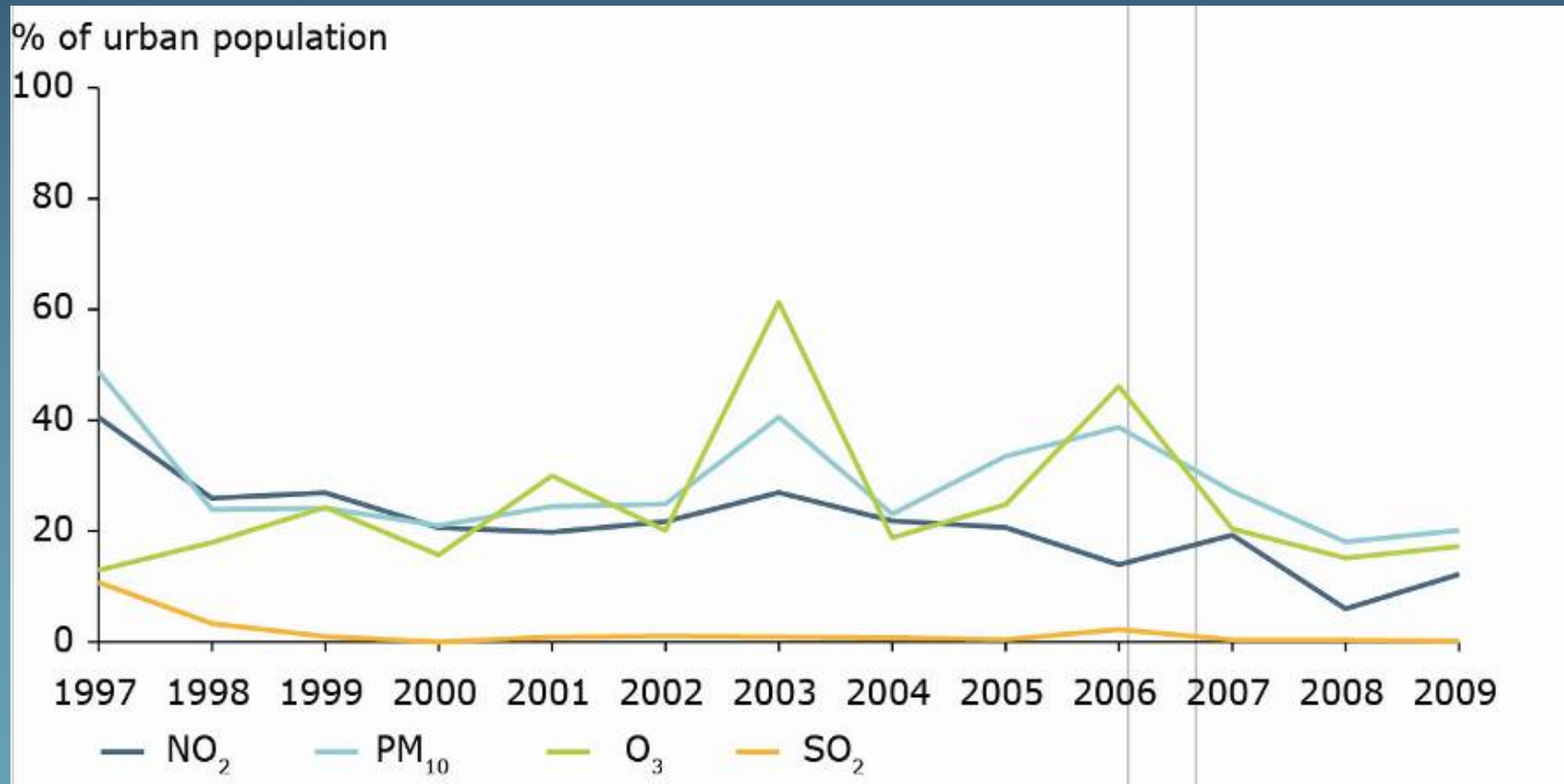
Particulate matter and nitrogen compounds are declining...





# Air pollution and air quality

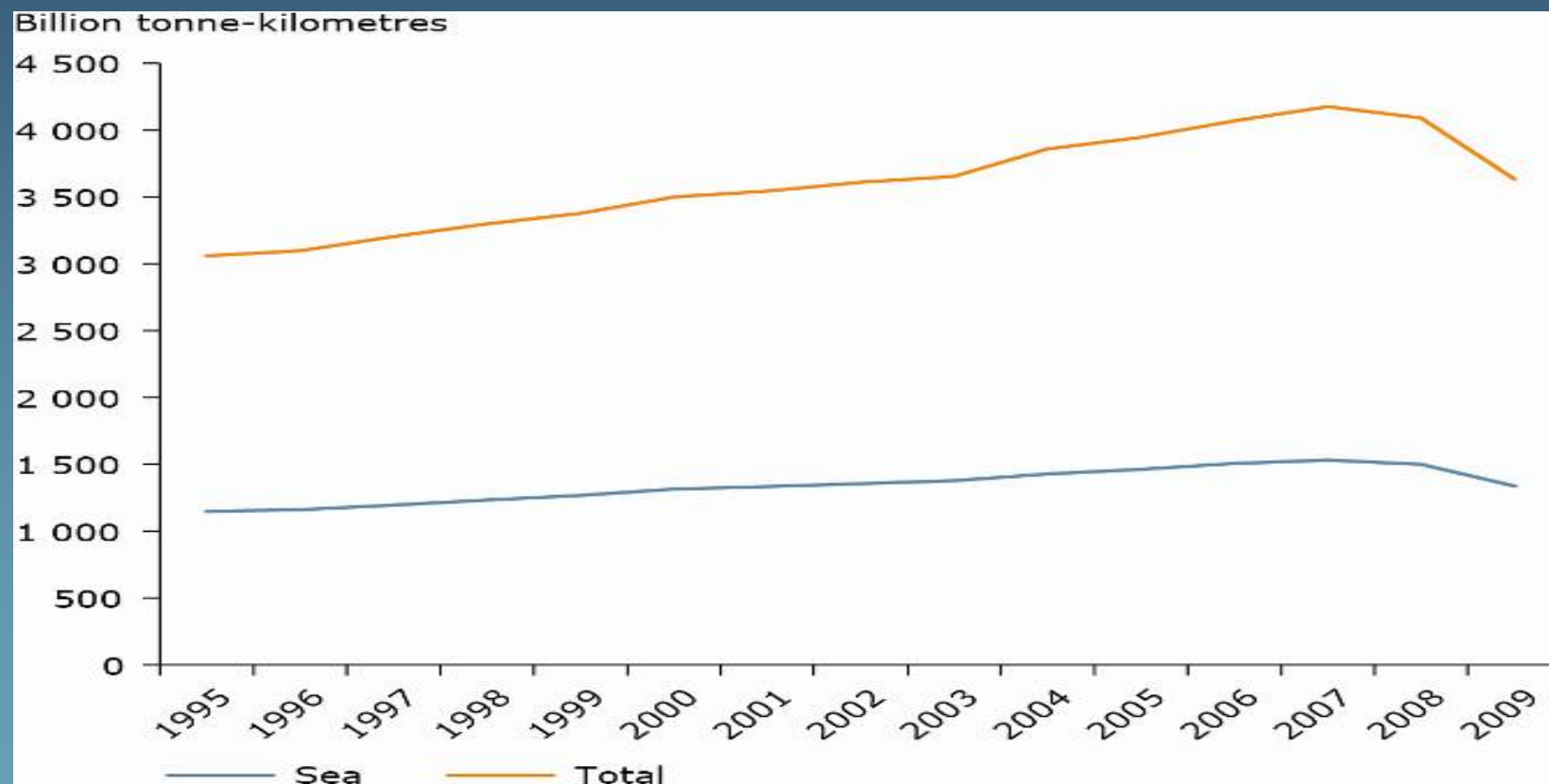
...but many people are still exposed to high concentrations of pollutants





# Marine activities and the marine environment

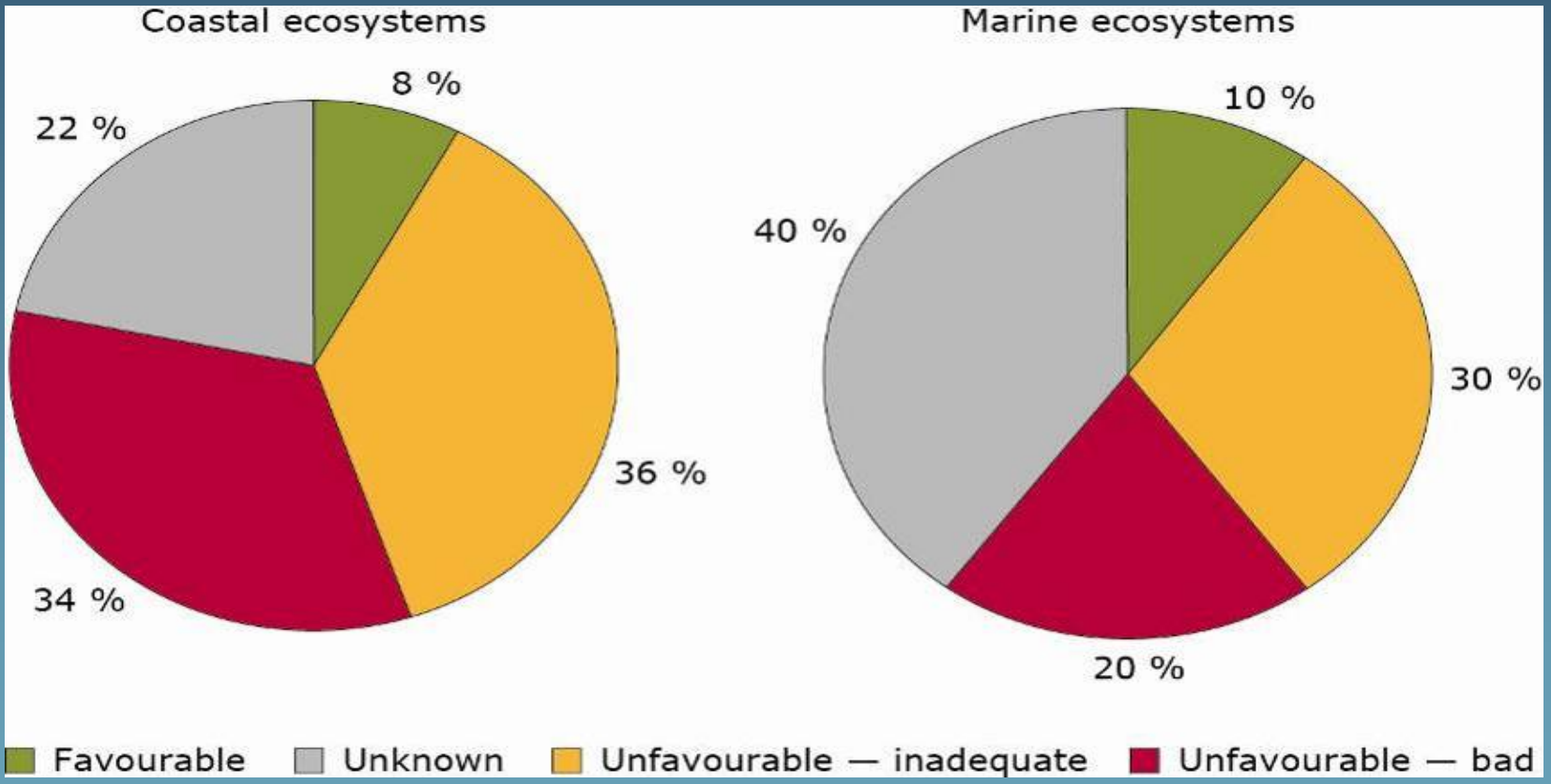
Very slight gains have been made in shipping efficiency....





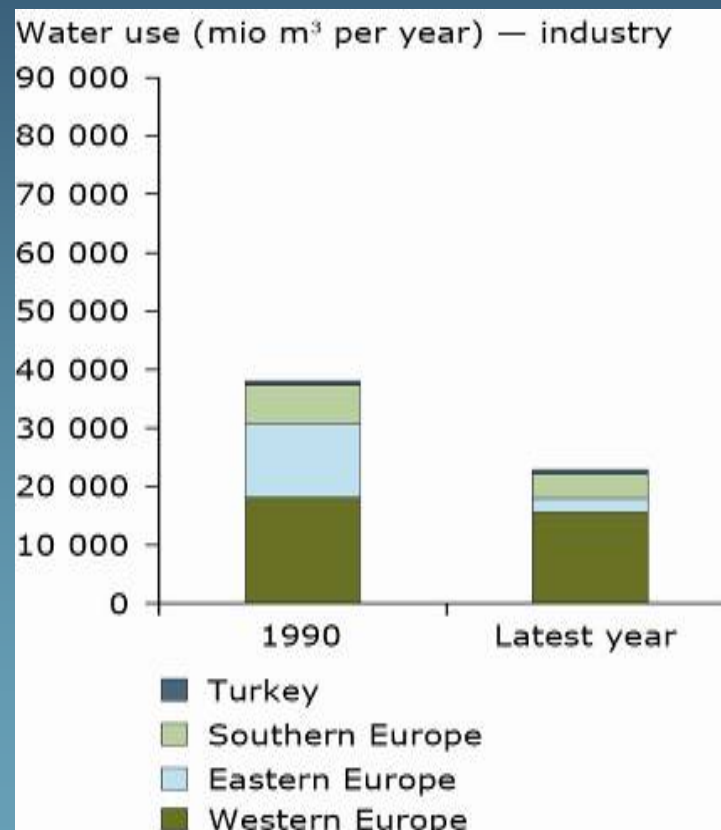
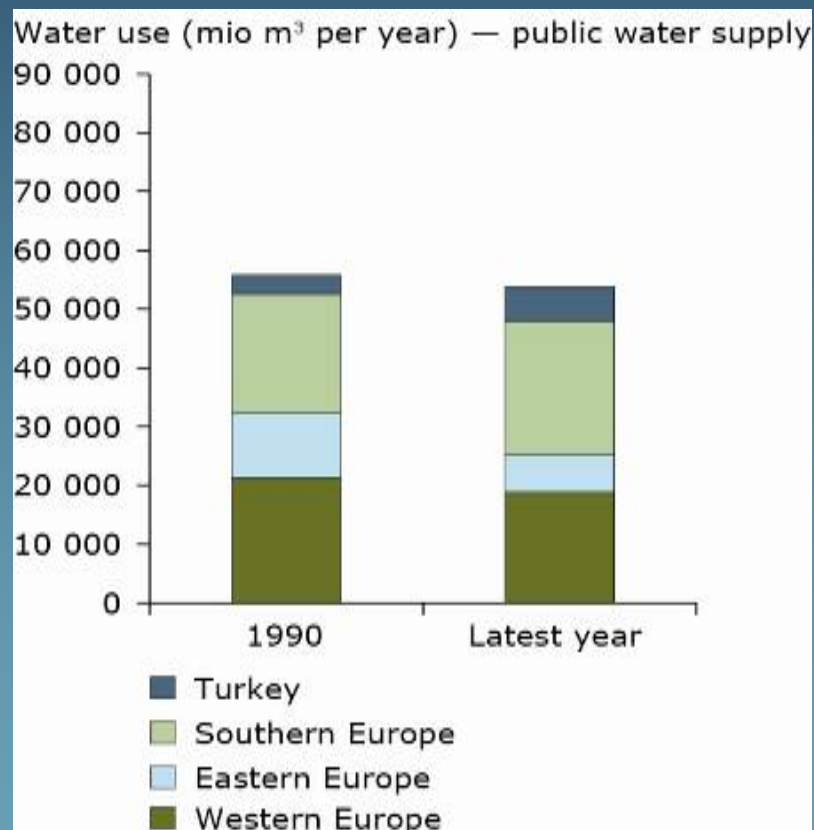
# Marine activities and the marine environment

...but many waters still have unfavourable conservation status



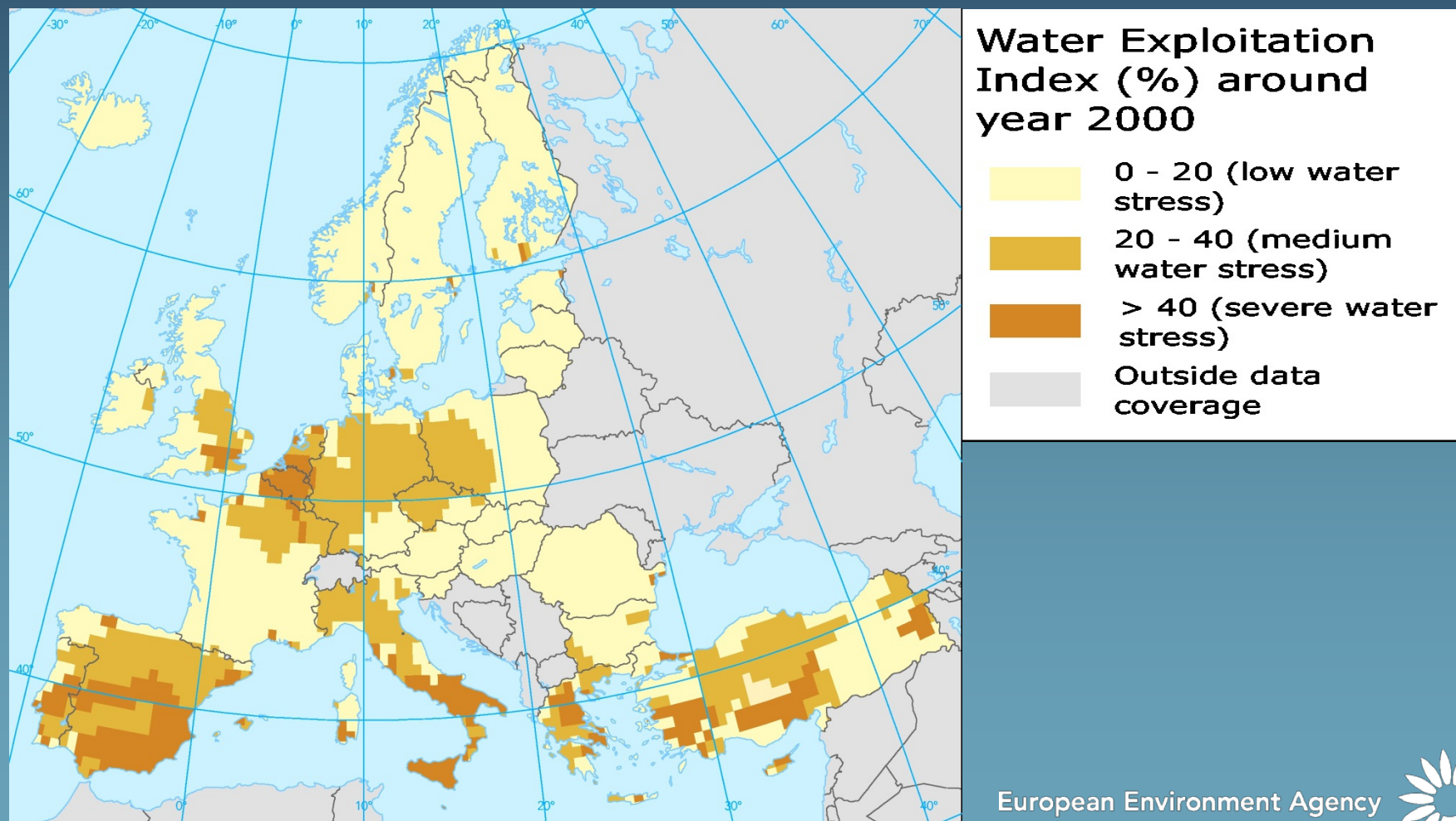
# Water use and water stress

Progress has been made in water efficiency....



# Water use and water stress

...but water stress is still a problem in Europe



# Indicators are imperfect tools



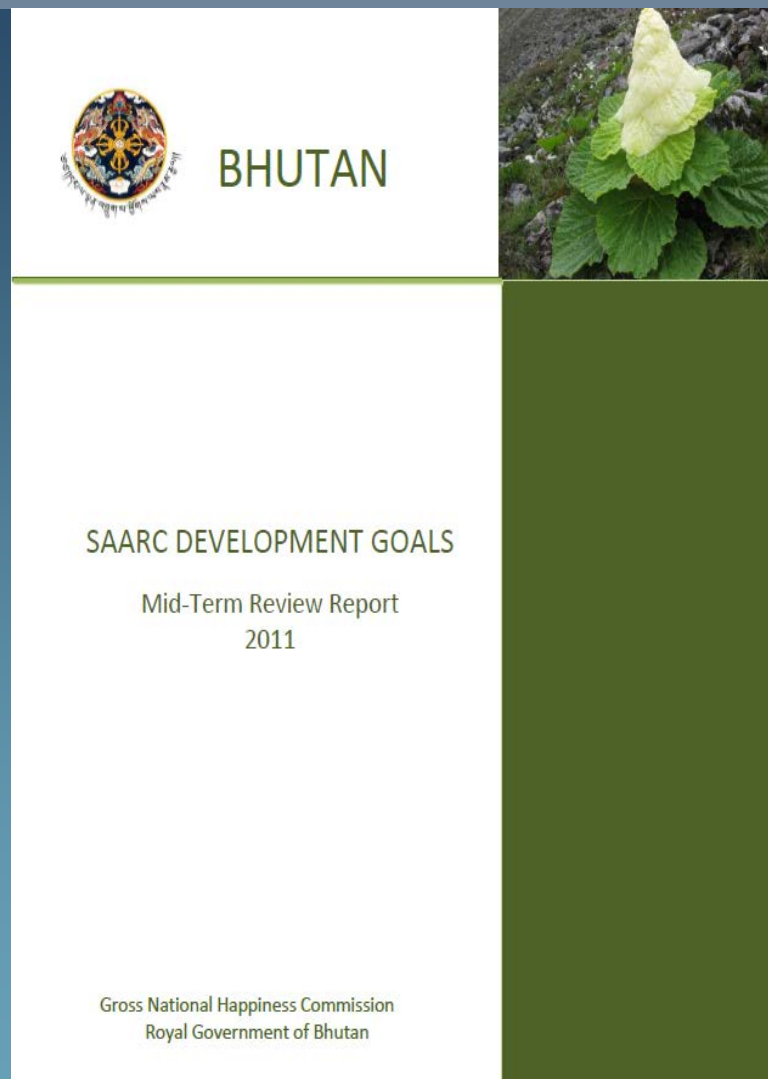
There are often considerable time lags at work in indicator analysis...

**...and they measure effects on highly complex systems....**



# Beyond GDP - progress

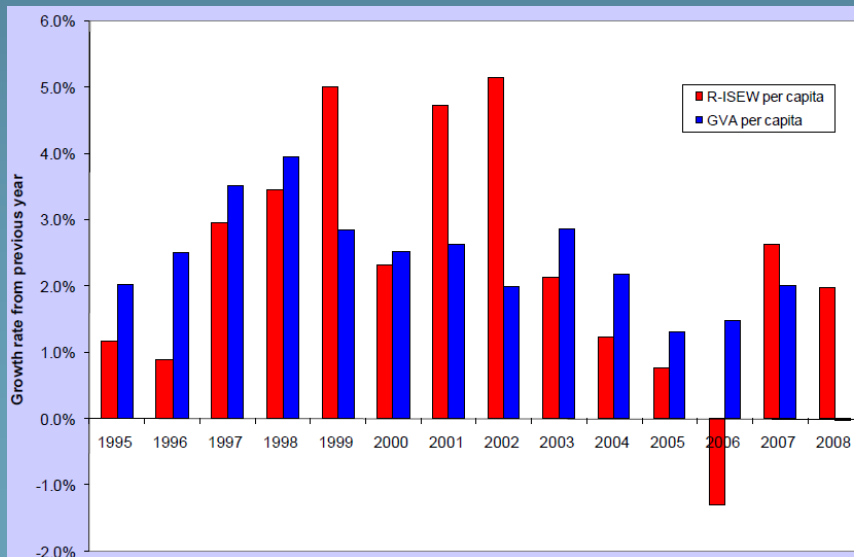
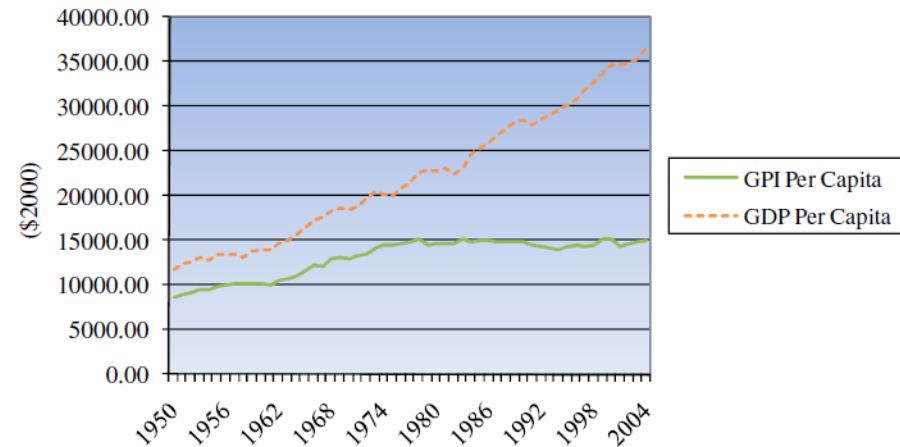
- Stiglitz-Fitoussi-Sen Commission (2009) and EC's 'Beyond GDP' initiative indicates that it is feasible to measure progress across the economic, social and environmental domains by using a basket of interlinked, coherent indicators.
- National initiatives like the Gross National Happiness Index of Bhutan



# Beyond GDP - progress

- GPI - genuine progress indicator
- R-ISEW - Regional Index of Sustainable Economic Well-being
- Source: <http://www.beyond-gdp.eu/>

Real GDP and GPI Per Capita 1950-2004





# Natural Capital





# Social and Cultural Capital



# Human Capital



# Building capital



# Imaginative capital



# Thank you!

Jacqueline McGlade  
Executive Director, EEA

[Jacqueline.mcglade@eea.europa.eu](mailto:Jacqueline.mcglade@eea.europa.eu)

